

Refractory



Shown in Polished Bronze

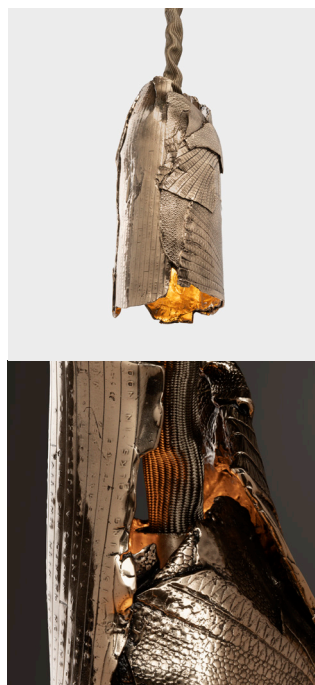
Cypher Hanging Light

The Cypher series is a shroud of nature's codes. The patterns born from millions of years of DNA coding, celebrated by both the outside and the rarely seen inside of the armadillos armor, are wrapped together with human language and literature.

Each work is piece-unique. The artist hand assembles each pendant from panels of torn wax. Textural composition, diameter, and height will slightly vary from one to another.

The concept invites commissions involving multiple castings and configurations.

The cord cover is woven from volcanic basalt fiber, drop lengths may be specified.



H. CYP.HL.01

Specifications

Dimensions	in	cm
Height Range	14-19	35-48
Diameter Range	6-8	15-20
Weight	45-65 lbs	
Materials	Finishes	
Cast Bronze	Artefact	
	Jet Black	
	Natural	
	Polished	

Lamping

E26 Socket, 40 W Bulb, 2700 K
Dimmable