

Refractory



Shown in Trailhead Cast Mineral Shade, Trailhead Cast Mineral Lamp Base, and Lucent Metal

ESC.LMP.01

Specifications

Dimensions	in	cm
Length	18.5	47
Width	8.25	21
Height	13.75	35

Weight 45 lbs

Materials and Finishes

Metal in Terra, Lucent, or Pale Basalt.
Other finishes available as custom.

Cast Mineral available in Collection
Cast Mineral Colors

Lamping

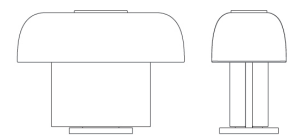
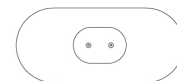
UL Listed, E12 Socket
2700K
40 W Equivalent Dimmable LED Bulbs

Esca Lamp No. 1

Cast Mineral

Esca, derived from the Latin word for lure or bait, are the small luminescent organs at the tip of the dorsal ray of female anglerfish. This luminous anatomy acts as a lure to attract prey.

The Esca Lamp expresses this underwater glow either through cast glass or skimming across cast mineral, much like an ocean floor. The shade and base halves are available in either material (or both in the same), creating a broad palate for curation and light play.



Detail at right: Andalusian Cast Mineral Shade, Andalusian Lamp Base, and Terra Metal (above)
Savanna Cast Mineral Shade, Savanna Cast Mineral Lamp Base, and Lucent Metal (below)

Refractory
4201 W Wrightwood Ave
Chicago IL 60639

+1 800 957 2577
inquiries@refractory.studio
refractory.studio

This document and the intellectual property contained in the document are the sole property of Arden Road LLC, dba Refractory, and may not be reproduced or transferred without written permission by same. © Refractory 2024
v06.15.26